

## Office of Research & Development



### City-Data Through Real-Time Images

Prof. Chun-Ting Chou:  
chuntingchou@ntu.edu.tw  
Prof. Ai-Chun Pang:  
acpang@csie.ntu.edu.tw  
Prof. Shou-De Lin:  
sdlin@csie.ntu.edu.tw



### Fighting Diseases With Healthy Cells

Prof. Jih-Luh Tang:  
tangjh@ntu.edu.tw



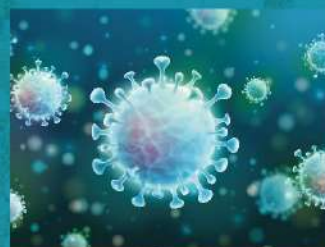
### Use Microfluidics Technology to Detect Disease-Related Molecules in the Body

Prof. Andrew Wo:  
andrew@iam.ntu.edu.tw

## Office of International Affairs



### Promoting SDG Through International Collaboration Seed Funding



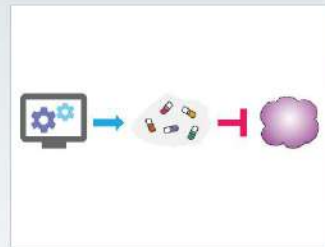
### COVID-19 Special Visiting Student Program Ensures Continuous Education



### Subsidies for Teaching in English Enhance International Learning Experience

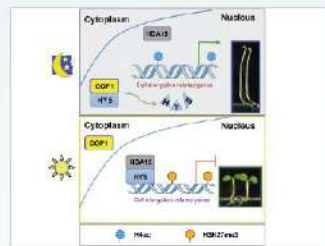


## College of Life Science



### Big Data Mining for Drug Repurposing Against COVID-19

Prof. Hsueh-Fen Juan:  
yukijuan@ntu.edu.tw



### HDA15 Interacts With the Histone Deacetylase HDA15 to Regulate Photomorphogenesis

Prof. Ke-Qiang Wu:  
kewu@ntu.edu.tw



### Ocean Litter May Never Drift Back to Land

Prof. Chia-Ying Ko:  
cyko235@ntu.edu.tw

## Office of Academic Affairs



### Overseas Taiwanese Students Return to Taiwan due to the Pandemic

Prof. Shih-Tong Ding:  
ntudeanacademic@ntu.edu.tw



### Implement Measures to Protect Students' Rights and Interests During COVID-19

Prof. Shih-Tong Ding:  
ntudeanacademic@ntu.edu.tw



### NTU Future Classroom 1.0 and 2.0

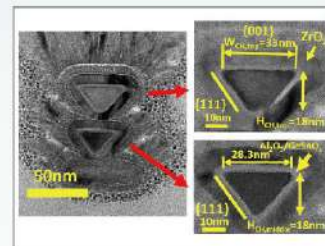
Prof. Chih-Kang Chiang:  
ckchiang@ntu.edu.tw

## College of Electrical Engineering & Computer Science



### World-Leading AI Research

Prof. Yung-Yu Chuang:  
cyy@csie.ntu.edu.tw



### Research of Semiconductor Technology Beyond 3nm-TSMC-NTU Research Center

Prof. Chee Wee Liu:  
cliu@ntu.edu.tw



### Harmonic Generation Microscopy Provides Unprecedented Contrast and Resolution for Clinical Diagnosis

Prof. Chi-Kuang Sun:  
sun@ntu.edu.tw

## College of Law



### The Development of Digital Technology and the Future of Law

Prof. Jen-Guang Lin:  
andrewlin@ntu.edu.tw



### Legal Integrity Safeguards for State Institutions and National Public Officials

Prof. Jen-Guang Lin:  
andrewlin@ntu.edu.tw



### Comparative Law

Prof. Jen-Guang Lin:  
andrewlin@ntu.edu.tw

# Research Highlights at

# NTU

2020.9

<https://oia.ntu.edu.tw/RHL>



Special Edition



國立臺灣大學  
National Taiwan University



COVID-19



SDGs



Social Impact



## College of Liberal Arts



**Striking a Balance Between Public Health and Data Privacy During the Pandemic**

Prof. Wei Jeng:  
wjeng@ntu.edu.tw



**Combining Theatre Literature, Fieldwork, and Innovation**

Prof. Ho-yi Lin:  
lhy@ntu.edu.tw



**Circulation of the Spherical Pattern: Starting From the Celadons of Goryeo and Song Dynasty**

Prof. Ming-liang Hsieh:  
mlhsieh@ntu.edu.tw  
Spherical pattern  
Shosoin, Japan

## College of Science



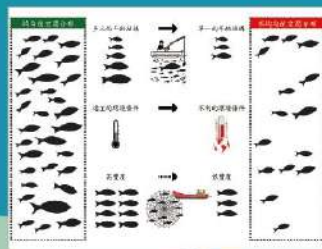
**Discovering Giant Nonlinearity in Silicon Nanostructures**

Prof. Shi-Wei Chu:  
swchu@phys.ntu.edu.tw



**Overcoming the Energy Gap Law in Near-Infrared OLEDs by Exciton-Vibration Decoupling**

Prof. Pi-Tai Chou:  
chop@ntu.edu.tw



**Truncated Age Structure and Warming Temperature Drive Marine Fishes Into Uneven Spatial Distribution, Weakening Their Sustainability**

Prof. Chih-hao Hsieh:  
chshieh@ntu.edu.tw

## College of Social Sciences



**Successful Prevention of COVID-19 Outbreak at Elderly Care Institutions in Taiwan**

Prof. Peishan Yang:  
peishan@ntu.edu.tw



**Reopening Colleges and Universities During COVID-19: Experiences From Taiwan**

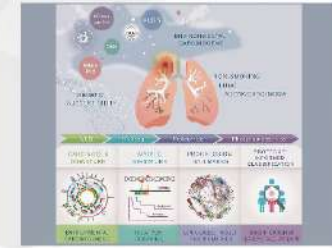
Prof. Chung-tao Shen:  
acshen@ntu.edu.tw



**Resurgence of Authoritarianism (SDG 16 "Peace, Justice, and Strong Institutions")**

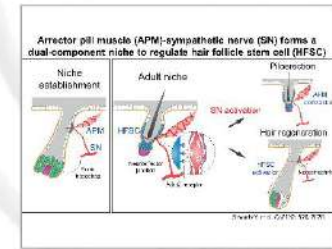
Prof. Chelsea C. Chou:  
chelseachou@ntu.edu.tw

## College of Medicine



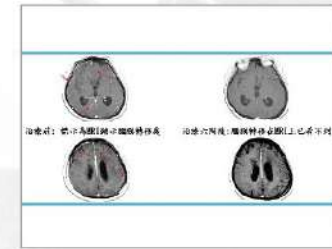
**Proteogenomics Landscape of Lung Cancer in Never-Smokers**

Prof. Pan-Chyr Yang's Group:  
pcyang@ntu.edu.tw



**A Dual-Component Sympathetic Nerve Niche Regulates Hair Stem Cells**

Prof. Sung-Jan Lin's Group:  
drsjl@ntu.edu.tw



**Osimertinib in Patients With Epidermal Growth Factor Receptor Mutation-Positive Non-Small-Cell Lung Cancer and Leptomeningeal Metastases: The BLOOM Study**

Prof. James Chih-Hsin Yang's Group:  
chihsyang@ntu.edu.tw

## College of Engineering



**Research and Talent Cultivation of Offshore Wind Energy**

Prof. Mao-Hsiung Chiang:  
mhchiang@ntu.edu.tw



**The Era of New Collaborations: Timebanking for Community Practices**

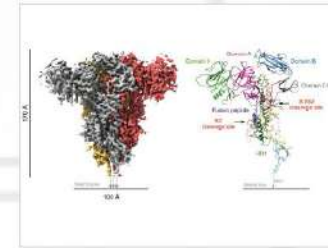
Prof. Shenglin Elijah Chang:  
shenglin@g.ntu.edu.tw



**Design of Enzyme-Less Hybridization Chain Reaction Probe Set for SARS-CoV-2**

Prof. Chii-Wann Lin:  
cwl@ntu.edu.tw

## College of Bio-Resources & Agriculture



**Revealing the Viral Entry Determinant of Feline Coronavirus for Facilitating the Developments of Vaccine and Therapeutics**

Assoc. Prof. Hui-Wen Chang:  
huiwenchang@ntu.edu.tw



**An Innovative IoT/WSN-Based Agricultural Monitoring Platform**

Prof. Joe-Air Jiang:  
jajiang@ntu.edu.tw



**Green Technology for Realizing Waste-to-Resource Towards a Circular Economy**

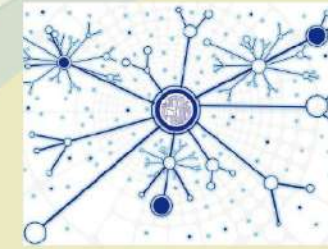
Asst. Prof. Shu-Yuan Pan:  
sypan@ntu.edu.tw

## College of Management



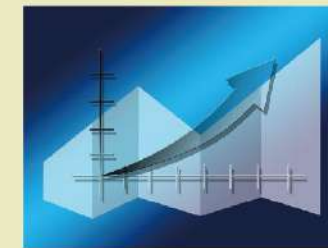
**Board Structure, Director Expertise, and Advisory Role of Outside Directors**

Prof. Yan-Shing Chen:  
yanshing@ntu.edu.tw



**Board Networks and Corporate Innovation**

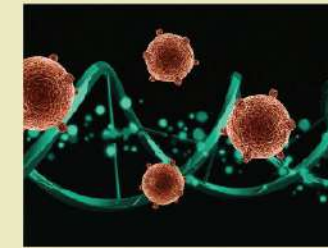
Prof. Ching-Hung Chang:  
chinghungc@ntu.edu.tw



**Higher-Order Omega: a Performance Index With a Decision-Theoretic Foundation**

Prof. Larry Y. Tzeng:  
tzeng@ntu.edu.tw

## College of Public Health



**The Discovery on Particulate Matter (PM) and Precision Prevention for Colorectal Cancer**

Prof. Chang-Chuan Chan:  
cchan@ntu.edu.tw



**Smart Exercise Modifies Obesity-Causing Genes**

A. P. Wan-Yi Lin:  
linwy@ntu.edu.tw



**Precision Population Health for Longer Life Expectancy Through Integrated Public Health Interventions**

Prof. Hsiu-Hsi Chen:  
chenlin@ntu.edu.tw